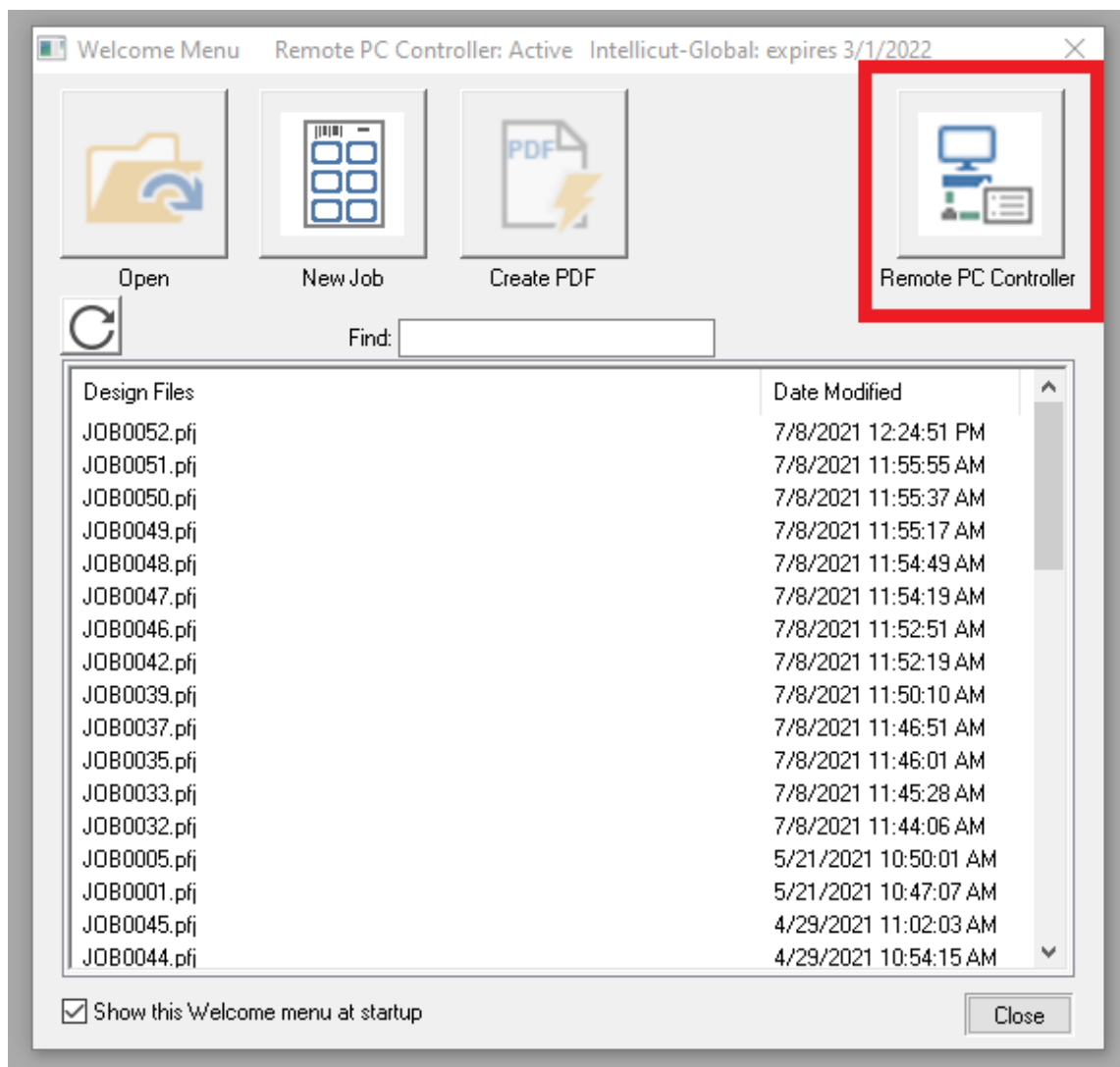


Remote PC Controller User Guide for Intellicut Global

Create, Control, Program and Finish All-In-One

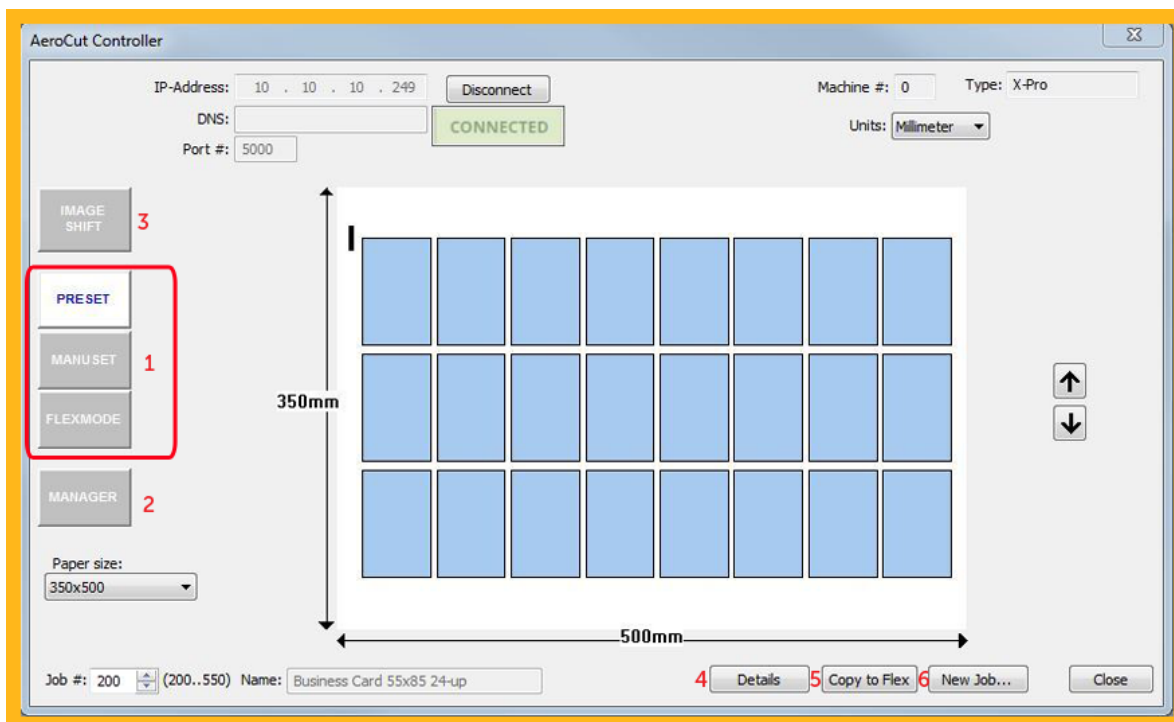
The Remote PC Controller is an extension of Intellicut Global. It is used to control and program the AeroCut X/X-Pro controller system remotely from any LAN connected PC. It can also be used as a starting point for any imposition template to create a print-ready PDF from the selected template. To use the Remote PC Controller, the AeroCut must be plugged into the LAN via ethernet and setup for IP connection. Please see the "Connect Intellicut Global to the AeroCut X/X-Pro Guide" for more information on how to setup the connection.

To open, select the Remote PC Controller button from the Welcome Menu:



Remote PC Controller User Guide for Intellicut Global

Remote PC Controller Interface Overview



1. The Preset, Manuset and Flexmode tables allow you to select a paper size and scroll through all templates in the AeroCut's memory. For any template type, you can toggle between the Details Mode or the Preview mode (4). Changes can be made and saved for all template types in the Details Mode. Preset templates can be converted to either Manuset or Flexmode templates, and Manuset templates can be changed, or converted to Flexmode. Any selected template can be used to create an Intellicut Global job (6) for imposition and PDF creation.
2. The Manager tab allows you to view a list of all user created templates on the AeroCut (Manuset and Flexmode). Here you can delete any template from the AeroCut's memory, or download a template currently on the AeroCut to your Intellicut Global library in order to create a new Intellicut Global job that may have been created on a different computer or on the AeroCut's interface.
3. The Image Shift tab allows you to select an Image Shift Compensation profile to be active on the AeroCut. It also allows for the creation and saving of the four Image Shift Compensation profiles.
4. The Details/Preview button allows for toggling between the two template modes. Details provides the AeroCut settings menu, while Preview shows a visual representation of the template.
5. **Copy to Flex** button is available when in the Preset or Manuset tab to copy the current template into a Flexmode template.
6. The **New Job** button is only available to users that currently have an active Intellicut Global license. This button allows you to take any currently selected template and create a new job for imposition and PDF creation in Intellicut Global.

The Preset and Manuset Tab

Preset Template Tab

Preset templates can be reviewed and used as a basis for a new Manuset or Flexmode template.

Convert Preset to Manuset

To convert a Preset template to a Manuset template, ensure you are in the Details Mode. You can adjust any value. Once any value is adjusted in a Preset template, the template will automatically convert to a Manuset template and the save button will activate.

You can make further adjustments as follows: (see details mode image to the right)

1. Update the template name.
2. Input a job number (Manuset template number between 1 - 100). You can also see all available numbers using **Select from list...**, which will read from the AeroCut and show a listing of all Manuset programming slots.
3. Save the template when completed.
4. To ensure the template meets compatibility standards, you may use the **Verify** button.

Convert Preset to Flexmode

5. From the preset tab you can also select the **Copy to Flex** button from either the Preview or Details mode, and it will automatically convert the template to Flexmode.

Manuset Template Tab

Manuset templates can be updated and saved or converted to Flexmode.

Modify a Manuset Template

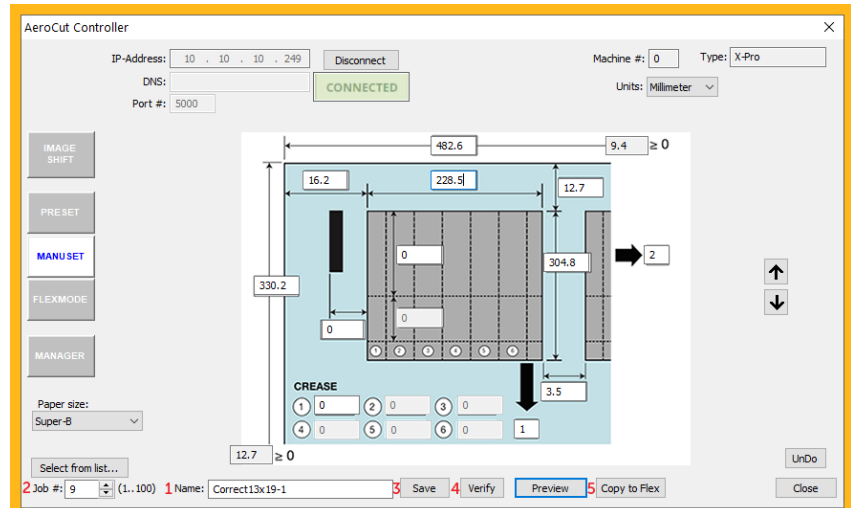
To modify a Manuset template, cycle to the template you wish to change. You can make any adjustment to template settings. When an adjustment has been made, the save button will appear and you can update the template name, define a template number and verify if the template meets compatibility requirements.

Convert Preset to Flexmode

From the Manuset tab you can also select the **Copy to Flex** button from either the Preview or Details mode and it will automatically convert the template to Flexmode.

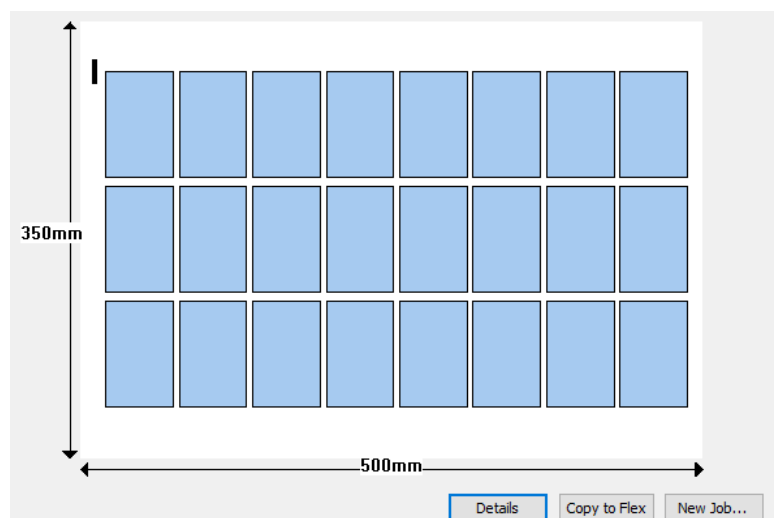
Details Mode

The Details Mode provides the AeroCut template programmable settings. It can be modified in any template type to create a new Manuset or Flexmode template.



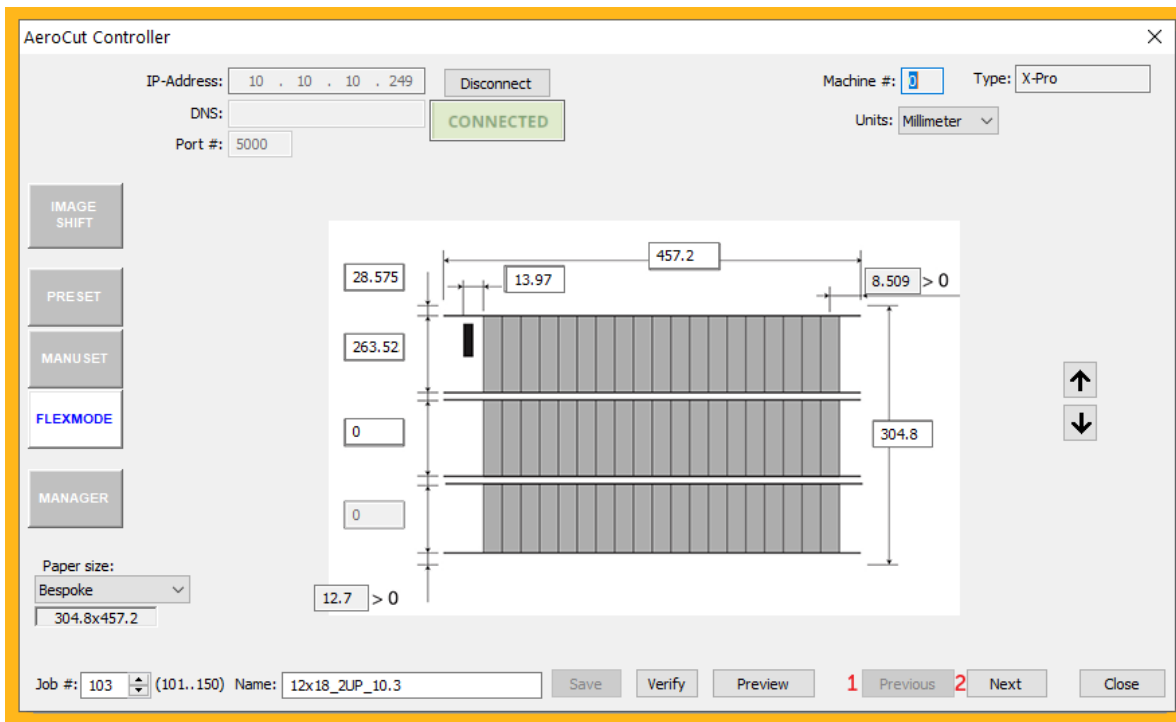
Preview Mode

The Preview Mode provides a drawn representation of the current selected template's settings. It is available for all three template types: Preset, Manuset or Flexmode. A new Intellicut Global job can be created from the New Job button to create an imposed PDF file with barcode for the selected template.

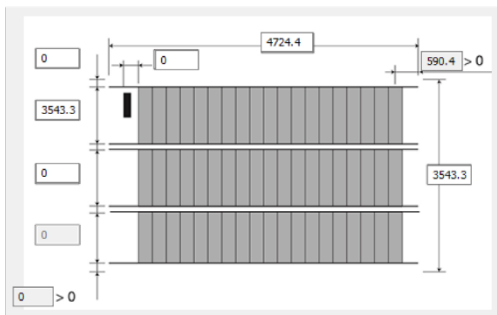


The Flexmode Tab

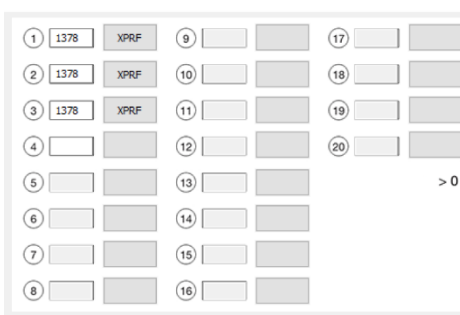
Flexmode works in the same way as Manuset mode. You can scroll through templates in Preview mode to view a visual representation. At any time, you can view the Details mode to modify and save template settings.



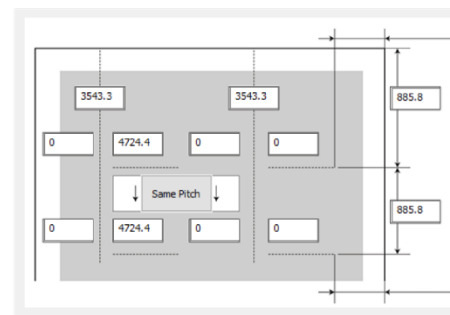
Flexmode's Details mode is unique because it has multiple menus that contain all Flexmode settings. When in the Details mode of a Flexmode job you can scroll between the three menus shown at the bottom of this page using the Previous (1) and Next (1) buttons.



Page Layout



Set Cut (CUT), Crease (CRS), Cross Perf (XPRF)



Set Perfs and Cross Perfs

Note: Model-X, does not have Jump or Cross Perfs, so the third menu is limited to updates of the two Perf Y-positions.

Image Shift

ONLY AVAILABLE IN AEROCUT X and AEROCUT X PRO CONNECTED DEVICES

The AeroCut X / X-Pro allows for users to program and select as active four unique Image Shift Compensation profiles. Use this tab to define each of these profiles. Each profile has 7 settings to control Shrinkage in X or Y, Gutter distance, Shift in X or Y, 2nd to Last Card shift, and Last Card shift. All changes are updated to the AeroCut once this dialog changes.

