

HOW TO CONNECT INTELICUT TO THE AEROCUT VELOCITY, AEROCUT X, AEROCUT PRIME and AEROCUT X PRO

PROGRAMMING THE AEROCUT NETWORK CARD

Installing and Configuring WIZNET

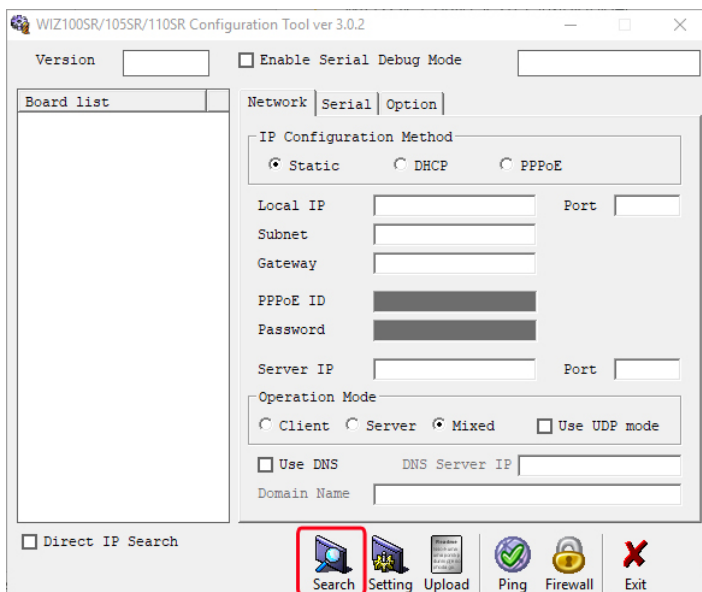
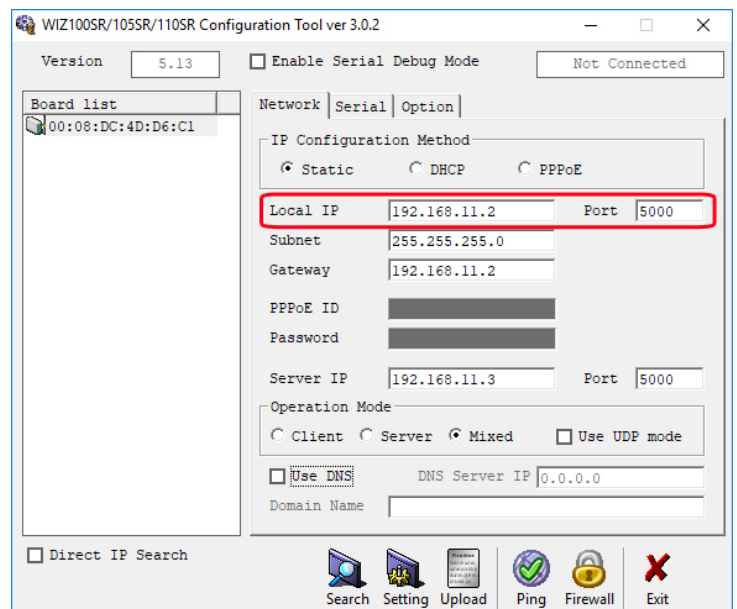
A utility called WIZNET is provided with Intellicut in order to associate a valid local IP address with your AeroCut, which can then be entered into Intellicut so that the software may identify and communicate with your AeroCut Slitter/Cutter/Creaser.

After installation of Intellicut, you will find file WIZ1xxSR_Config.zip in your Intellicut Program Files folder (or can download it from the link in step 1). Unzip this file and then Run Install.exe in the WIZ1xxSR_Config_v.3.0.2_install folder. Once it is installed, run the WIZ1x0SR_105SR_CFG_V3_0_2 file in the WIZ1xxSR_config_v3.0.2_src folder.

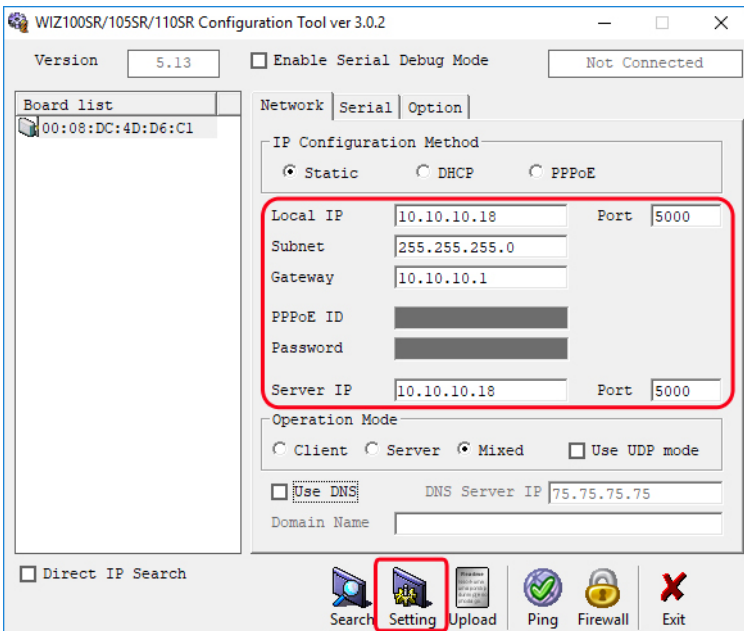
Programming the AeroCut

1. Ensure your AeroCut is turned on and connected to your network through an Ethernet cable. Next run the WIZNet tool: [WIZ1x0SR_105SR_CFG_V3_0_2.exe](#)
2. You will see an initial screen like this:

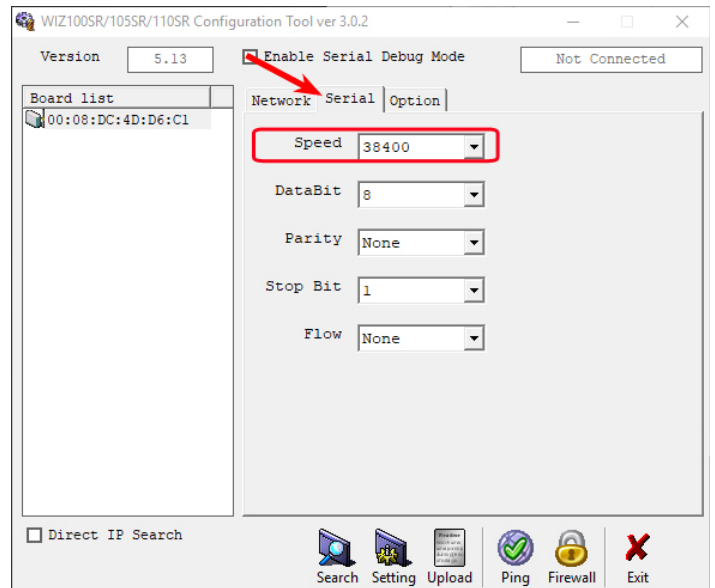
3. Click on the Search button.
4. Your AeroCut should be found on your network and listed in the Board list. Verify that the IP Configuration Method is Static and the Default Local IP of 192.168.11.2 and Port 5000 should display, as circled in red below.



5. You must replace the default local IP with a valid static IP address from your local network. Type this valid local address in the Local and Server IP fields. In the picture below the IP address of 10.10.10.18 was entered, which is a valid address for this user's network. The subnet and gateway should also be updated. Port of 5000 will always be used. The default IP of 192.168.11.2 cannot be used and must be changed. You must click on the Settings button at the bottom of the dialog to store any changes you make to the WizNet board.



6. Click on the Serial tab (shown below). The values shown above must match what is shown on your screen. Typically, the Speed defaults to 57600. Change this to 38400 using the drop-down. If any changes were made, click on the Setting button to store these values to your WizNet board. You may now close this software.



- On the PC that has the Intellicut we highly recommend that you configure that PC's ethernet as a Static IP address in your Windows Operating System. (Ethernet Properties -> Internet Protocol Version 4 (TCP/IPv4) Properties)
- When attempting to communicate with the Aerocut via Intellicut for the first time, the IP address and Port # (5000) will be required. A good starting point to enter this information is by selecting Aerocut Manager from the Welcome Menu. All further communication will remember these settings, and should automatically connect, allowing for the storing of custom template information to your AeroCut, minimizing any possible errors.

Lytrod Software
sales@lytrod.com
 WWW.LYTR OD.COM